

## GIS-K3:

Dual-WAN Wireless /n  
300Mb/s Hotspot Gateway  
for up to 50 Users

- ☐ Low cost HSIA gateway
- ☐ Long range wireless 802.11/N, 300Mb/s
- ☐ Dual-WAN for reliability
- ☐ Plug and play: easy to use wizard speeds installation
- ☐ Custom login page; choose from 12 backdrops or create your own design
- ☐ Editor for the legal disclaimer
- ☐ Control Internet access with codes that are generated and managed on the unit
- ☐ Social media login with Facebook, fetch user profile and like the business page
- ☐ Reporting to track Internet access code usage
- ☐ A firewall protects the business network for PCI DSS compliance
- ☐ Remote configuration
- ☐ QoS overall bandwidth control, with bandwidth settings for each code
- ☐ Content filter blocks access to non-approved websites
- ☐ Timer calendar blocks use outside business hours
- ☐ Access code API for PoS and PMS applications
- ☐ Peer to peer (P2P) Torrent blocking
- ☐ Credit card billing using PayPal(R)
- ☐ URL and MAC filter
- ☐ Access point failure monitoring and port forwarding



**Any Business can Provide Wireless Internet Access for Guests and Visitors Quickly and Economically with the GIS-K3: with Dual WAN connections for load-balance and fail-over**

The GIS-K3 offers an economical approach to providing managed Internet access for restaurants, coffee bars and motel/hotel lobbies. The high performance wireless 802.11/n offers connection speeds up to 300Mb/s. The GIS-K3 can be installed by any small business that has to provide wireless Internet access for the public.

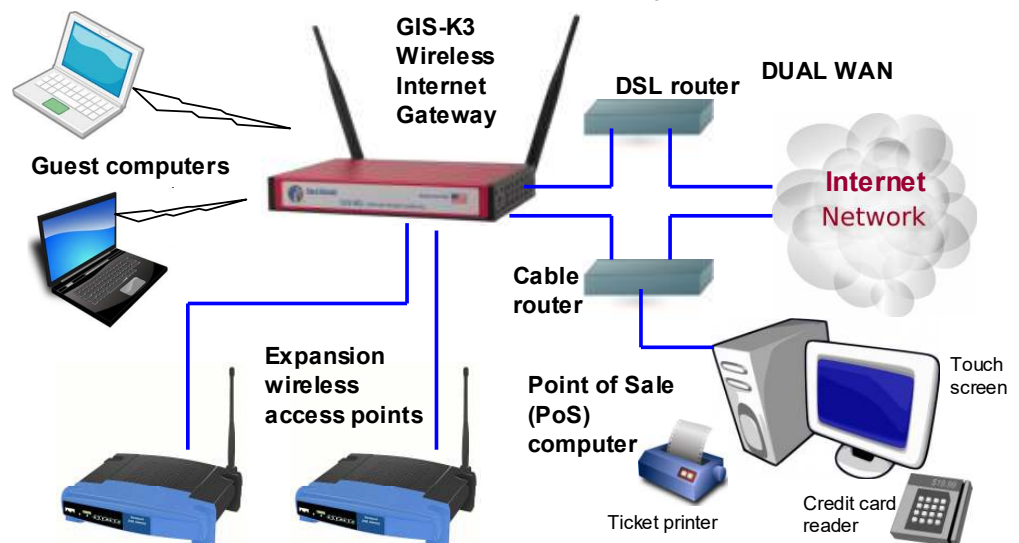
The GIS-K3 wireless unit is suitable for small installations such as bars and restaurants, and provides a good area of wireless coverage. Installing the GIS-K3 product is simple: connect the unit to the Internet and power it up. A computer wireless connection is made to 'Hot Spot' and then a browser is opened. The browser screen shows the setup wizard.

The GIS-K3 can provide free Internet access with a disclaimer. The disclaimer text was prepared according to US Federal law, however it can be edited to include local laws and restrictions.

The GIS-K3 can also control Internet access: users type an access code into the login page to connect to the Internet. The GIS-K3 includes access code generation and management that is used by the business owner to generate and delete codes. Access codes can be downloaded and printed. Businesses can charge customers for Internet use by selling codes.

The GIS-K3 LAN ports can be connected to additional wireless access points to extend the hotspot range by connecting them to the LAN ports. The firewall prevents a hacker getting access to business computers or point of sale terminals (PoS) via the public WiFi Hotspot. The GIS-K3 firewall feature is compliant with the requirements of the PCI DSS recommendations.

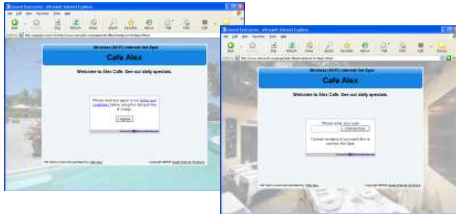
The GIS-K3 has Dual-WAN to permit a reliable Internet connection with load balancing and fail-over.





## Users View

### Login page options



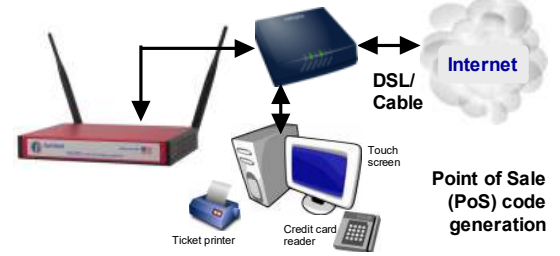
Select from menu or customize

## Custom Login Pages



Create a walled garden

## PoS Integration



Generate access codes via your PoS

## Configuration

### Setup wizard



The setup wizard is a six-step process completed after installation

### Access code generation



Access codes are generated and managed using a simple display

### Advanced Features



Exclusive features that make GIS gateways very powerful tools

## GIS-K3 Technical specifications:

### GATEWAY FEATURES

Plug and play with the setup wizard  
 Firewall blocks access from LAN to WAN  
 Local and remote configuration  
 Content filter using OpenDNS  
 Download/upload speed control  
 Allowed IP and MAC addresses  
 Free and controlled Internet access  
 Timer/calendar to set availability  
 Equipment failure monitoring  
 Credit card billing for Internet access  
 Peer to peer (P2P Torrent) blocking

### AUTHENTICATION

Concurrent clients: 25  
 Access code database: 10,000

### LOGIN PAGE

Branding via the login page generator  
 Twelve login pages are preinstalled  
 Upload your own background graphic  
 Create a custom HTML login page design  
 Add custom login page banner advertising  
 Disclaimer agreement with built in editor  
 Link to business web site home page  
 Login page access code generator  
 Login code usage reporting  
 Create a 'walled garden' using URL bypass  
 Library of login page designs available  
 Login page simulator on our website  
 Optional billing page for CC processing  
 Customer data collection application  
 Login page backup/restore  
 Usage reporting

### API FOR PoS INTERFACE

PoS integration to sell access codes  
 Code fetch/ manage via HTTP

### ETHERNET

DUAL-WAN (Internet) 2 x RJ-45 10/100  
 LAN1-LAN3 (network) 3 x RJ-45 10/100  
 LAN firewall PCI-DSS compliant

### WIRELESS

Wireless port: 802.11/n, 300Mb/s  
 RF Power output: +27dBm (500mW)

### DIMENSIONS AND POWER

Enclosure: W 3" x D 4" x H 1"  
 12 volt 110v/220v supply, 10W

**WARRANTY:** 1 year for product defects

### Applications where the GIS-K3 has been deployed

- |                  |                     |                  |                      |
|------------------|---------------------|------------------|----------------------|
| – Restaurant     | – Sports club       | – Bookstore      | – Church             |
| – Coffee bar     | – Gymnasium         | – Internet kiosk | – Contractors office |
| – Public library | – Visitor center    | – University     | – Municipal office   |
| – Truck stop     | – Dentist reception | – Motel          | – Event reception    |

Call 1-800-213-0106 for further information, or see our web site: [www.guest-internet.com](http://www.guest-internet.com)

Guest Internet Solutions, Unit C-12, 6073 NW 167 St., Miami, FL 33015, USA. Part of the Fire4 Systems Group

The maximum number of concurrent users for the GIS-K3 is specified with a backhaul circuit of 20 Mb/sec and with users sending/receiving emails and viewing web sites. The maximum number of concurrent users will be reduced when the Internet backhaul is slower than the recommended speed, and when the user traffic includes download/upload of large files.