



GIS-R20

Hotspot gateway
for up to 500 guests

- ↳ Low cost Internet Hotspot Gateway
- ↳ Cloud system for monitoring & management
- ↳ Plug and play: easy to use install wizard
- ↳ Selection of login pages or custom design
- ↳ Provide free Internet access after agreement to custom terms and conditions
- ↳ Provide controlled access using tokens; charge for or offer free Internet access
- ↳ Provide access using PayPal® or credit cards
- ↳ Provide access using social media (Facebook™)
- ↳ Usage reporting to track utilisation
- ↳ Firewall to protect your business & users
- ↳ Firewall for PCI DSS compliance
- ↳ Remote configuration of GIS unit
- ↳ Bandwidth control (QoS), apply speed and data limits to users
- ↳ Website URL, IP and MAC filters
- ↳ Content filter for websites management
- ↳ Block access outside business hours
- ↳ Access point failure monitoring
- ↳ API for management & PoS applications
- ↳ Settings backup and restore



Many businesses offer free wireless Internet for guests or charge for the Internet service. The GIS units make providing such a service safe and simple.

Main features include displaying a customised login page, capturing user data for marketing and managing users with a range of powerful tools.

The GIS units are a powerful marketing tool for any business allowing you to advertise and promote your brand via the customised login page to every user that connects to your network.

The login pages of the GIS units can be customised either using the simple wizard or by uploading a fully customised login page.

The GIS units also protect the network from attackers, preventing access to office computers or PoS system. Having an open network introduces risk to a business' network which can be mitigated with the cyber-security features of the GIS unit.

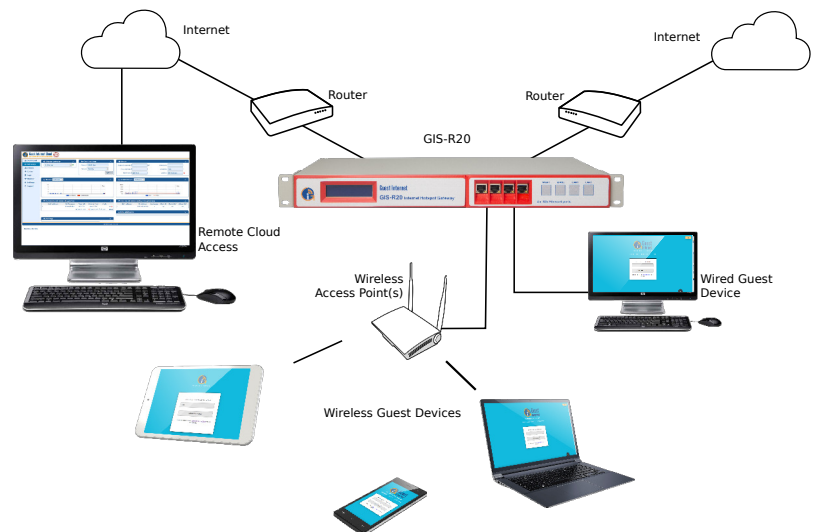
A common problem with offering an open internet access to guests, is that the business owner can be held liable for activity on their network. The GIS unit captures all required information to help authorities to identify a user for any illegal activities.

GIS unit can be configured to provide content filtering via OpenDNS. Using this functionality you can block access to websites based on categories providing a safe browsing experience for your guests.

Bandwidth controls to improve quality of service (QoS) on the unit can be enabled to limit user download and upload speed, spreading the available bandwidth evenly across users.

The GIS units are all simple plug and play installations, requiring no specialist knowledge.

There are absolute no other charges and no monthly fees. Firmware upgrades and lifetime support are 100% free.





Guest login using

- Facebook™
- Disclaimer
- Codes
- Email
- PayPal®/Credit Card

Custom Login pages



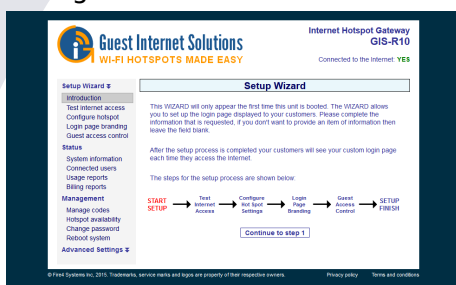
Create custom login pages to increase brand awareness and offer promotions

Cloud Management



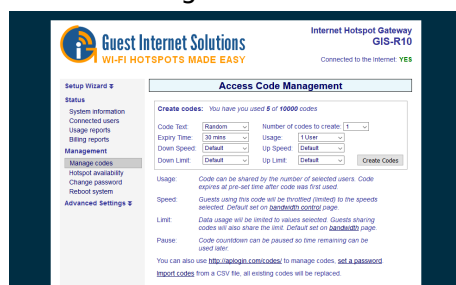
Manage Users, codes and settings remotely from a single location

Configuration



The setup wizard is a six-step process completed after installation

Access code generation



Access codes are generated and managed using the admin interface

Advanced features



Exclusive features to give you control over your network and users

GIS-R20 Technical Specifications

Gateway Features

- Cloud management (optional)
- Plug and play with the setup wizard
- Firewall Blocks access from LAN to WAN
- Local and remote configuration
- Content filtering with OpenDNS
- Download/Upload speed control
- Allowed IP and MAC addresses
- Free and controlled Internet access
- Timer/calender to set availability
- Access point failure monitoring
- Port-forwarding for remote access to APs
- Facebook and email login for data collection
- Dual WAN with load-balancing and failover

Authentication

- Concurrent Clients: 500
- Access code database: 10000

API for POS interface

- PoS integration to sell access codes, create,delete, view and manage via HTTP

Ethernet

- **WAN1-WAN2:** RJ-45 10/100/1000
- **LAN1-LAN2:** RJ-45 10/100/1000

Operation

- Commercial grade equipment suitable for installation in any non-industrial environment

Dimensions & Power

- **Enclosure:** 44cm x 21cm x 4.5cm
- 12v 110v/220v supply 1.25A

Warranty

- 1 year for product defects

Login page options

- Unique user code login
- Purchase code with paypal or credit/debit card
- Social Media login with Facebook
- Login with Email for data capture
- Disclaimer mode
- Open access mode

Customisation

- Custom branding with the login page generator
- Upload custom background image
- Full customisation with HTML and CSS login pages. Uploaded via the admin interface

Call 1-800-213-0106 for further information, or see our website: www.guest-internet.com
Fire4 Systems Inc, Guest Internet Solutions, Unit C-12, 6073 NW 167 St., Miami, FL 33015,