



## Internet Hotspot Solutions for Public Libraries



- ❑ Low cost Internet gateways that are simple to install
- ❑ Plug and play: the easy to use wizard speeds installation
- ❑ Custom login page with client branding, choose from 12 backdrops or create your own design
- ❑ Protect against lawsuits with the built-in disclaimer; the legal disclaimer can be edited
- ❑ Authenticated access uses codes that are generated and managed on the unit; no external RADIUS server is required
- ❑ A firewall protects the internal library network providing PCI DSS compliance
- ❑ Master bandwidth control, and individual bandwidth settings for each code
- ❑ Content filtering ensures a family friendly Internet service by blocking adult web sites
- ❑ Monitor Internet utilization through comprehensive reports
- ❑ Access code API for PoS and PMS applications
- ❑ Remote access and configuration
- ❑ Configuration backup and restore



Almost all public libraries provide Internet access for visitors. Some libraries have computers that patrons can use. Some libraries provide a wireless Internet WiFi Hotspot for patrons who bring their own computers. However libraries are at risk from data thieves and people who abuse the service.

Libraries face a serious risk when users bring computers that have file-sharing software. Illegal file sharing is easily detected and the library might be at risk of becoming the target of a lawsuit. It is important to block peer-to-peer (P2P) file sharing software to ensure that the library is not held responsible for copyright infringement. It is also necessary to regulate data speeds to share the resource between all users. Content filtering should be used to block adult web sites.

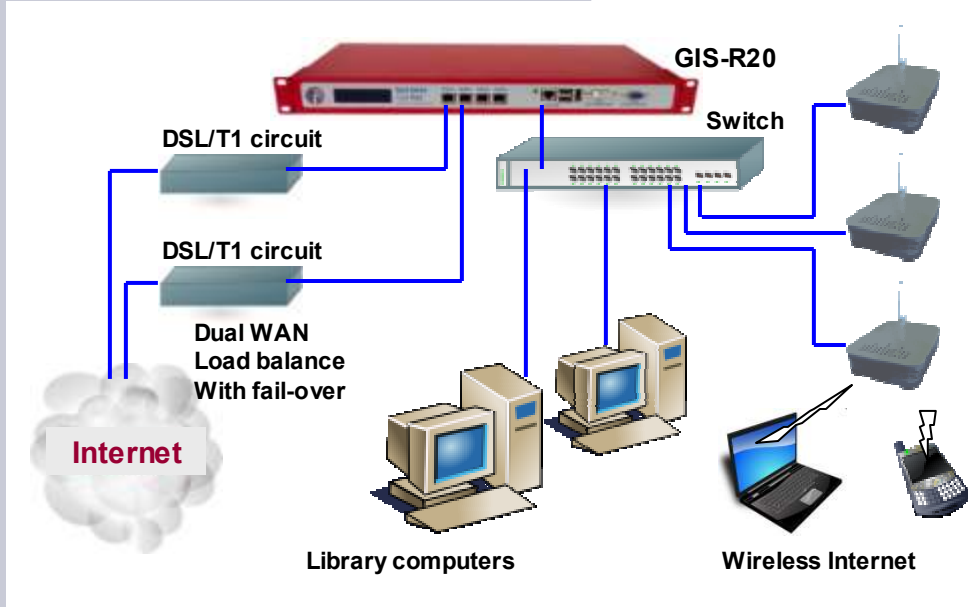
**Each Guest Internet gateway has the tools that a library needs to provide Internet for patrons in a safe and secure manner: content filtering, data speed control and peer-to-peer (P2P) blocking**



GIS gateways also prevent unauthorized use, and prevent use of the wireless service outside business hours.

Access codes can be issues to patrons who present a valid library card.

Each gateway has a seven-day timer that activates the wireless Internet service during business hours and de-activates the service outside these hours.



Library computers and wireless access points are wired to a switch, which connects to the GIS gateway. Any patron who wishes to access the Internet has to pass the login page authentication process.

Custom login pages can be prepared to serve as advertising platforms, announcing library events and services. We can provide assistance with your custom login page requirements.

#### SMALL LIBRARY - GIS-R4

- Gateway for libraries that require a few wireless access points
- Can support up to 100 concurrent users with computers and smart-phones
- Circuits up to 20 Mb/s
- Options of credit card billing and P2P blocking



#### MEDIUM LIBRARY - GIS-R6

- Gateway for larger libraries that require multiple wireless access points and computers
- Can support up to 200 concurrent users with laptops and smart-phones
- Circuits up to 40 Mb/s
- Options of credit card billing and P2P blocking



#### LARGE LIBRARY - GIS-R20

- Provide a high performance Internet service for large city libraries
- Supports up to 500 concurrent users with computers and smart-phones
- Dual WAN circuits up to 100 Mb/s each, with load sharing and fail-over for high reliability
- Options of credit card billing and P2P blocking



#### Easy to install, no special technical skills are required



Simple setup Wizard takes less than 5 minutes

Login page generator and custom login pages



Simple user interface: no complicated programming is required

We manufacture a range of hotspot products that offer the exact price / performance for any size of public library. Do you have special requirements for your Internet Hotspot? Our technical support staff will be glad to help you with a solution that meets your specific requirements. We can also provide a custom login page service based on your business web site. Please call our sales staff at 1-800-213-0106 for product and price information. Please see our web site: [www.guest-internet.com](http://www.guest-internet.com) for product data sheets and manuals.

Guest Internet Solutions, Unit C-12, 6073 NW 167 St., Miami, FL 33015, USA. Part of the Fire4 Systems Group

