

The Guest Internet Hotspot Internet gateway products (GIS-R2, R4, R5, R6 and R10) have Ethernet LAN ports that can be used to connect wireless access points, Internet café kiosk computers, wired hotel rooms and business center computers. The Internet (WAN) port must be connected to the DSL or cable modem

First connect the gateway as shown in the diagram to configure it using the setup wizard.

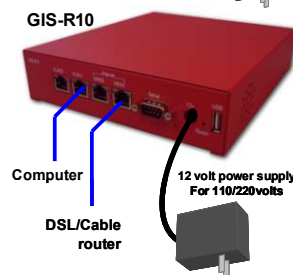
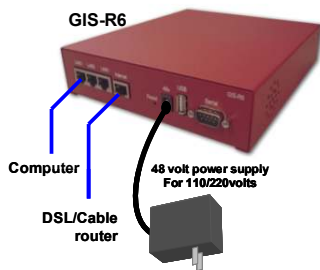
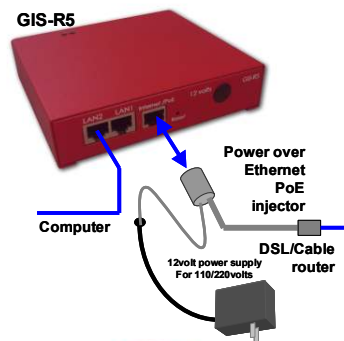
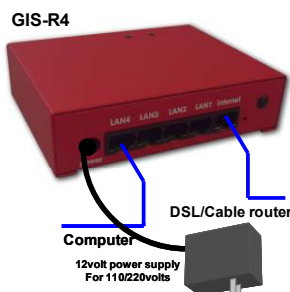
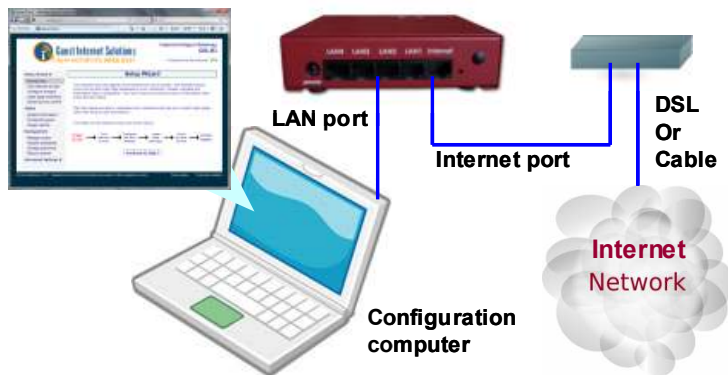
Connect your computer Ethernet connector to the LAN1 connector of the gateway. Your computer Ethernet connector should be configured for dynamic IP or as a DHCP client. It cannot be used with a fixed IP.

Connect the Internet connector of the gateway to the DSL or cable modem LAN Ethernet connector. The DSL or cable modem should have the LAN network connector configured as a DNCP server. Check with the equipment manual to verify the LAN connector configuration.

For operation the WiFi Hotspot users will use the wireless network or kiosk computers. Connect wireless access points and kiosk computers to the gateway LAN ports.

If you wish to connect more devices then connect an Ethernet switch to one of the LAN ports.

GIS-R2 Configuration

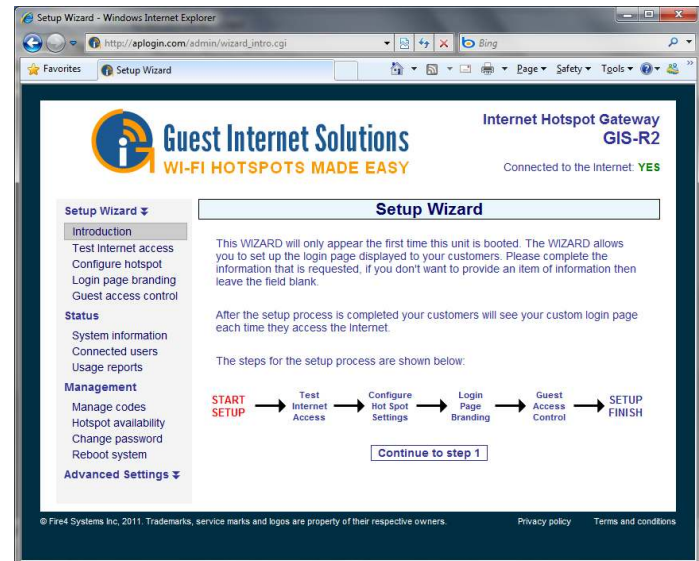


Reset to Factory Defaults: With the GIS-R2 powered up, use a paperclip to press the reset button through the hole. Hold the reset button down for 10 seconds the release. All parameters will be reset.

First Time Product Configuration

Connect your laptop computer to one of the LAN ports of the gateway. Connect the Internet port to you DSL router.

Open your computer browser. Instead of your login page you will see the page shown below. This page is the SETUP WIZARD.



The setup process has four steps. Follow the instructions to type in the information requested on each page. Then click on the button to go to the next page. When the setup process is completed your personalized wireless Internet service will be ready for your guests to start using. The setup process is shown overleaf: flip this page over to start the setup process.

Login to the Admin pages at any time. Connect your computer to the gateway via an Ethernet cable or wireless. Then open your browser and type in the URL:

<http://aplogin.com/admin>

The username is **admin**, and the password is *the one* that you entered with the wizard.

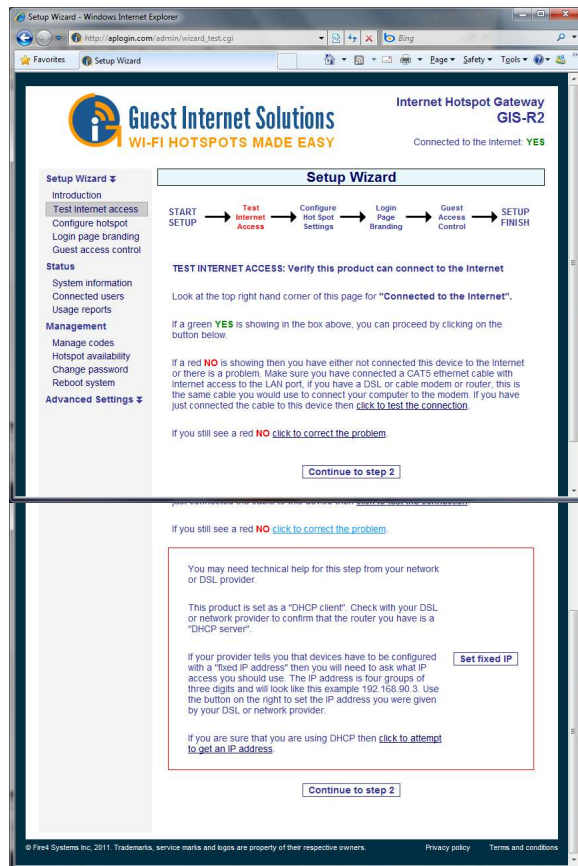
When the page opens select the option you need in the menu. See the manual for more information about configuration.

Step 1: test the Internet access

Your gateway unit **must have** a connection to the Internet for the configuration process to be completed. If you see a green YES then proceed to step 2. If a red NO then click on the link to diagnose the problem.

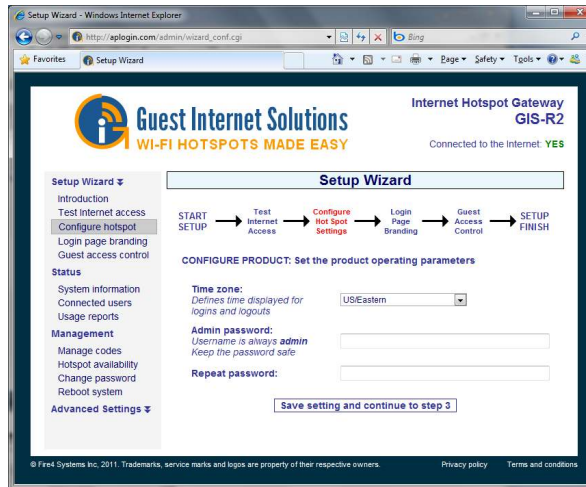
You may have to set a 'fixed IP'. If you are not familiar with setting a fixed IP then ask a network technician to provide help with this.

Some DSL and Cable routers have a firewall setting that prevents the gateway connecting to the Internet. You may have to change a setting on the router firewall.



Step 2: configure hotspot settings

Select your time zone and set your password. Note your password and keep in a safe place.



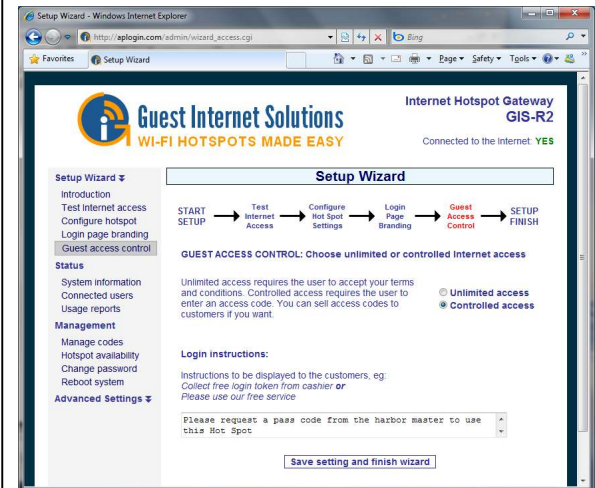
Step 3: login page branding

Your guests will see this information on the login page



Step 4: select guest access

If you select unlimited access then your guests will click on a disclaimer to access the Internet. If you select controlled access then you will have to generate access codes for your guests.



Finished, click on reboot to start your hotspot

After reboot wait two minutes then open your browser to see your login page. If you want to make changes then login again and click on the setup wizard.

